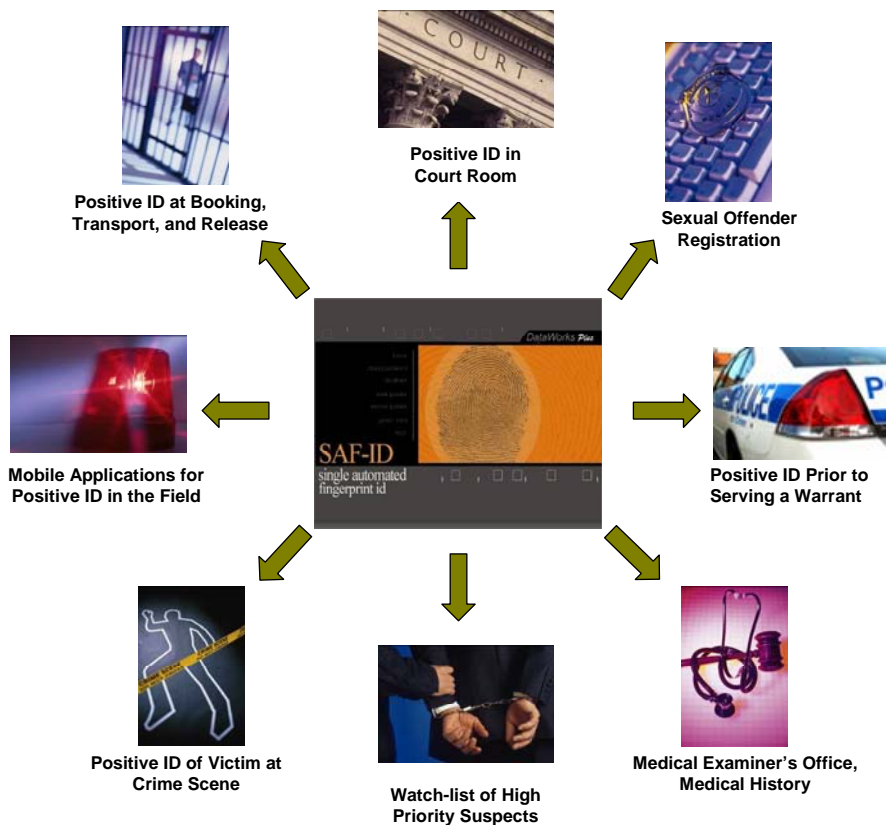


SAF-ID Fingerprint Identification

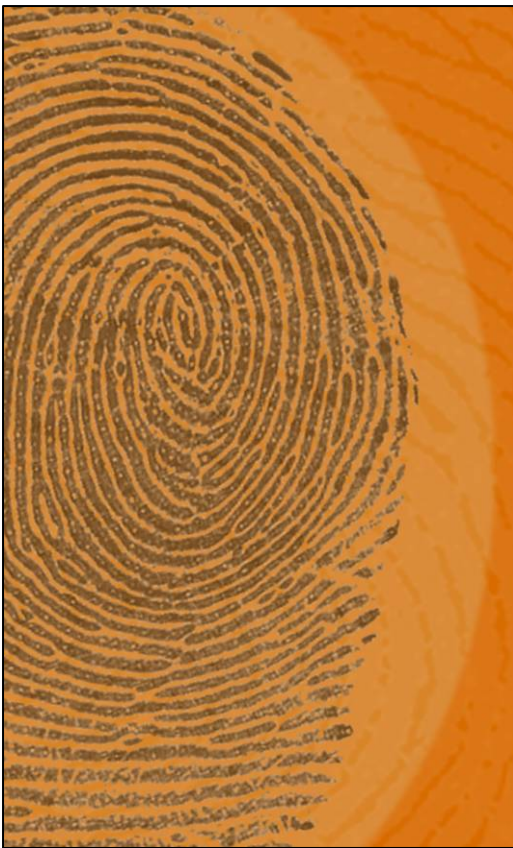
SAF-ID is an extremely fast and accurate software solution that uses advanced fingerprint matching techniques to provide positive identification of an individual. This solution allows an officer to scan a person's finger on a portable scanning device and search a database for a positive match. This is beneficial and useful wherever positive ID may be required, such as: in the field, at an evacuation shelter, in the court room, or in the jail. **SAF-ID** is mobile, so you can take it with you anywhere that positive identification is needed.

Below are some examples of where **SAF-ID** can be used:



SAF-ID is scalable to meet system performance requirements for any size agency. From a few hundred matches per second, to hundreds of thousands of matches per second, **SAF-ID** can be configured to meet the specific needs and budget for your agency.

SAF-ID supports many fingerprint scanners that are available on the market, including USB scanners and wireless devices. Fingerprint scanners can be used with a laptop or even a PDA and deployed for mobile applications. A DataWorks Plus Sales Professional can advise your agency as to the scanner model that best suits your agency needs.



DataWorks Plus

A Leader in Criminal Justice and Law Enforcement Technology

SAF-ID

AUTOMATED FINGERPRINT ID

DataWorks Plus

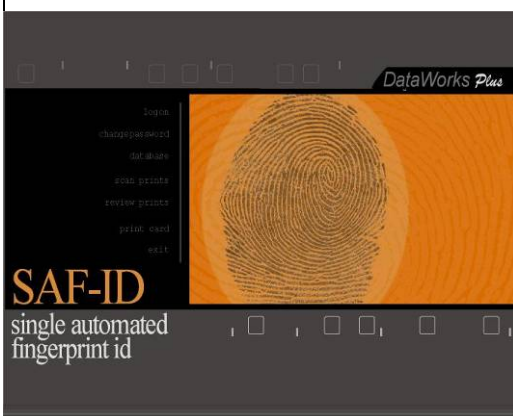
1168 North Pleasantburg Drive
Greenville, SC 29607

Phone: 866-632-2780

Fax: 864-672-2787

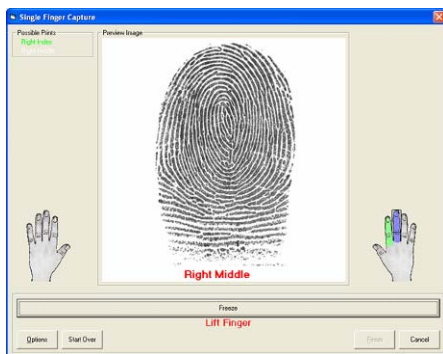
E-mail: sales@dataworksplus.com

www.dataworksplus.com



SAF-ID Screen Shots

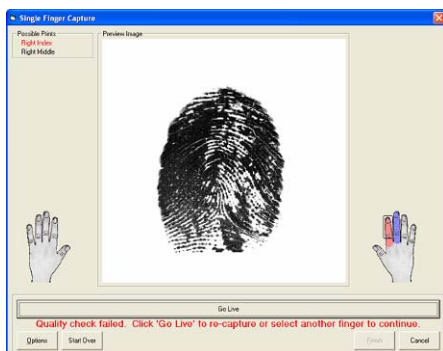
Fingerprint Capture



Hit Response Returns Photo and Demographic Data



Immediate Feedback if Fingerprint Quality is Poor



Hit Response Returns Photo on PDA Device



Single Finger Scanner Models



Fingerprint Enrollment Process

Your **SAF-ID** database can enroll fingerprint data from the following devices:

- ▶ Input from existing live scan device
- ▶ Input from existing NIST Archive
- ▶ Input from existing AFIS
- ▶ Input from single finger device
- ▶ Input from a flatbed scanner

Fingerprint Search Process

SAF-ID can be configured to perform one-to-one fingerprint **VERIFICATION** of an individual. Fingerprint verification determines if the person “is” or “is not” who they claim to be. This process compares a live fingerprint scan against a fingerprint that is stored in the database for an individual.

SAF-ID can also be configured to perform one-to-many fingerprint **IDENTIFICATION** of an individual. Fingerprint identification determines “who is this person?” This process compares a live fingerprint scan against all fingerprints that are stored in the database in order to identify the individual.

Seamless Integration

SAF-ID can be seamlessly integrated with these DataWorks Products:

- ▶ LiveScan Plus
- ▶ NIST Manager Plus
- ▶ Digital PhotoManager

DataWorks Plus can provide seamless integration using our suite of products; or we can provide seamless integration with your existing AFIS, live scan, and photo imaging systems.