



Digital PhotoManager™ provides a Web Access application that can be run over agency networks via Internet Explorer, Netscape, Mozilla and other popular browsers. Web enabling software is designed for desktop processors, mobile units in patrol cars, and palm devices and can be implemented agency wide.

WEBWORKS PLUS™: SEARCH YOUR DATABASE WHEREVER YOU ARE, EVEN FROM PALM DEVICES OR WHILE ON PATROL

WebWorks Plus™ provides record updates, retrieve, lineups, photo zoom and crop, print, and user activity tracking without requiring the download of software plug-ins or creating special configurations. It operates via Intranet, virtual private network, local-area network (LAN), wide-area network (WAN) or via Internet connectivity using industry standard browsers.

Search over 1 million records with results within 5 seconds. Then, just drag and drop the photos to a lineup. Photos will be arranged randomly to eliminate favoritism. Lineups can be saved for later use or you can print customized reports.

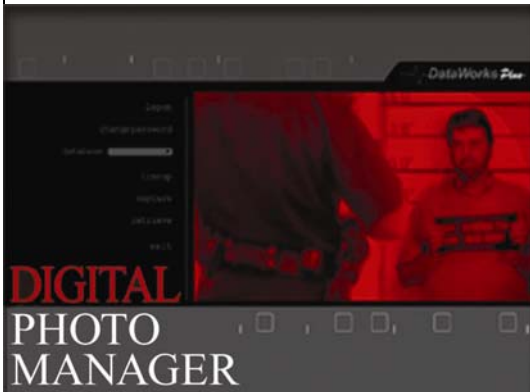
The new Witness Mode will let you create a lineup for witness viewing. This mode is password protected so it is secure, even if you're not there. The Witness Activity Report makes it simple to know which photos were positively identified and even tells you how long each image was viewed.

DataWorks Plus

DIGITAL PHOTOMANAGER™

WEBWORKS PLUS

A Leader in Law Enforcement Technology



DataWorks Plus

1168 North Pleasantburg Drive
Greenville, SC 29607

Phone: 864-672-2780

Fax: 864-672-2787

E-mail: sales@dataworksplus.com

WebWorks Plus Features:



Create & Retrieve Lineups

Create	User selectable 6, 8, and 12 pack lineups displayed and printed either all together or one at a time
	Mix photos from unlike databases
	Without favoritism: <ul style="list-style-type: none"> - Candidates added to a random position - Fillers added to a random position
	If needed a different lineup mode can support a manual lineup that allows the user to select the positions of candidates and fillers
	Drag and drop candidates and fillers into a lineup
	Prevent duplicate photos by not allowing any two photos with the same SID# to be added to a lineup
Print	Data sheets with photos, wanted posters, missing persons photos, and more
	Print to any printer connected to the system or to the network
	Print the lineup as well as lineup reports
Save	Include lineup descriptions up to 50 characters long
	Include a lineup narrative with unlimited text
	Always know who created a lineup and the date it was created
Search	Find a previously created lineup using any or all of the saved information: <ul style="list-style-type: none"> - Creation date range - User that created the lineup - Lineup description

Photos

Enhance	Crop images so all image views are similarly sized in the lineup
	Zoom in and out on an image
View	Choose which photos to view: front views only, side views only, all views, SMT views
Search	Select an image and then press a button to quickly see all the photos with the same SID #
	User can select to view between 1 to 100 images to display at one time when viewing search results

Print

Print reports to any Windows supported printer

Print multi-page reports with logos, all photo views, photo views from many records, complex forms with lines, water marks, faded logos and various sized documents

Witness Mode

Secure	Block all other application features from the witness
	Password protected
	Toggle for data display on or off
	Pause and resume options
Identify	Suspect identification (yes, no, maybe)
Report	Report of witness activity can be saved, retrieved, viewed and printed
	Witness mode report includes information such as witness name, date, images selected as positive or possible identification, the length of time each image was viewed and more

Database

Search	Complex searches of over 1 million records return results within 5 seconds
	Search by any combination of the customizable database fields
	Select multiple databases to search

